



## Intro meeting to the WASP study trip to the UK 2022

Daniel Axehill, Paul Townend, Christian Berger, Elin Anna Topp, Linda Ström



# Organizers



Daniel Axehill  
Linköping



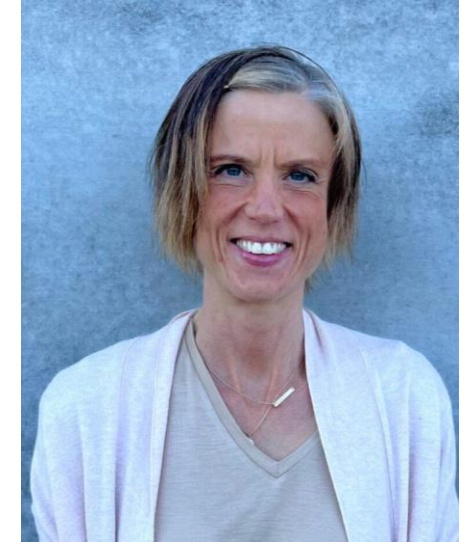
Paul Townend  
Umeå



Christian Berger  
Chalmers / Gothenburg



Elin Anna Topp  
Lund



Linda Ström  
PO, Linköping

# Purpose of this trip

- To show you interesting research that can inspire you in your work
- To help you build up an international network
- To introduce you, your work, and WASP to the host universities

The ARM logo consists of the lowercase letters 'arm' in a bold, blue, sans-serif font.

UNIVERSITY OF  
**OXFORD**



**AstraZeneca** 

The AstraZeneca logo features the word 'AstraZeneca' in a purple, sans-serif font, followed by a stylized yellow and orange geometric logo consisting of two interlocking shapes.

**Imperial College  
London**

# High-level Agenda

	Monday 10 October	Tuesday 11 October	Wednesday 12 October	Thursday 13 October	Friday 14 October
START	<b>BUS to KCL</b> <b>LEAVES AT 08:00</b> Departs: Mercure Hotel Paddington	<b>BUS to Cambridge</b> <b>LEAVES AT 07:00</b> Departs: Mercure Hotel Paddington <b>(note: bring own breakfast)</b>	<b>BUS to Oxford</b> <b>LEAVES AT 7:30</b> Departs: Mercure Hotel Paddington	<b>BUS TO Cranfield</b> <b>LEAVES AT 07:50</b> Departs: Mercure Hotel Paddington	<b>BUS TO Imperial South Kensington Campus</b> <b>LEAVES AT 09:00</b> Departs: Mercure Hotel Paddington
MORNING	<b>KCL</b> Coin Street Community Builders,108 Stamford St, London SE1 9NH  <b>09:00 - 12:30</b>	<b>AstraZeneca</b> Cripps Court Auditorium, Magdalene College, Cambridge  <b>09:00 - 12:00</b>	<b>Oxford Robotics Institute</b> Lady Margaret Hall, Oxford  <b>09:30 - 12:20</b>	<b>DARTeC Cranfield</b> Building 105, Cranfield University, Cranfield, Bedfordshire MK43 0AL  <b>09:00 - 12:00</b>	<b>Imperial College</b> 58 Prince's Gate, London, SW7 2PG  <b>09:30 - 12:30</b>
LUNCH	Lunch <b>12:30 - 13:30</b>	Lunch & Workshops <b>12:00 - 14:00</b>	Lunch <b>12:20 - 13:30</b>	Packed lunch on Bus	Lunch <b>12:30 - 13:30</b>
		<b>Bus to ARM</b> Departs at 14:00		<b>Bus to Cambridge</b> Departs 12:00	<b>Bus to White City Campus</b> Departs at 13:30
AFTERNOON	<b>KCL</b> Coin Street Community Builders,108 Stamford St, London SE1 9NH  <b>13:30 - 17:00</b>	<b>ARM</b> 110 Fulbourn Rd, Cambridge CB1 9NJ, UK  <b>14:00 - 17:00</b>	<b>Oxford Robotics Institute</b> Lady Margaret Hall, Oxford  <b>13:30 - 16:45</b>	<b>Cambridge University</b> Dept. Engineering, Fen Causeway, Cambridge  <b>14:00 - 17:00</b>	<b>Imperial College</b> Translation and Innovation Hub (I-Hub), 84 Wood Lane, London, W12 0BZ  <b>14:00 - 18:00</b>
		<b>BUS to Cambridge</b> Departs at 17:15	Free Time	<b>BUS to London</b> Departs at 17:30	
DINNER	KCL Light Dinner and Mingle <b>17:00 - 18:00</b>	Dinner in Cambridge Find your own restaurant <b>17:30 - 20:00</b>	Pre-drinks @ Talbot Hall Dinner @ Deneke Dining Hall <b>18:30 - 22:00</b>	Dinner in London Find your own restaurant	Dinner in London Find your own restaurant
END	FREE EVENING (Possible Musical)	<b>BUS to London</b> Departs at 20:15	<b>BUS to London</b> Departs at 22:00	FREE EVENING	FREE EVENING

# Hotel / travel information (1)

## Arriving from Heathrow:

- Get Heathrow Express (recommended)
- OR Elizabeth Line (takes longer but cheaper)

## Arriving from Stanstead:

- Get the Stanstead Express
- OR National Express (coach / bus service)

## Arriving from Gatwick:

- Gatwick Express to Victoria
- Tube from Victoria to Paddington (Circle or District line)



# Hotel / travel information (2)

## We have two hotels:

- Mercure Paddington
- Mercure Hyde Park

<https://www.google.com/maps/@51.5194648,-0.1798831,15.62z>

Hotels are very close to Paddington Station

## National rail strikes on 8th October!

<https://tfl.gov.uk/cdn/static/cms/documents/standard-tube-map.pdf>

# Food

- What meals are included?
- Bring your own breakfast on Tuesday
- Has everyone told us of dietary requirements, allergies, etc.?
- Bring snacks, fruits, water,... for the bus trips
- Wear suitable clothes at the dinner at Oxford



# Practical Information [1]

## What is included and what isn't

- Meals and transportation in the program are included.
- Social activities not in the program are not included.
- Extra costs added to hotel bills to be paid by own credit card and are not included.

**Are activities in the schedule mandatory, or can I do private activities if I would like to?**

**It's very important to come to the bus at the time given.**

- If you miss the bus, you have to pay tickets yourself to catch up/go back to the hotel

## Social activities

- Musical is suggested for Monday evening as we are in the right area.



# Practical Information [2]

## The visa situation

- If you have not received a decision yet; make sure you book refundable tickets.
- Keep the Excel sheet regarding your visa status up-to-date.

Send us (in particular Linda) an e-mail if you will not be able to join the trip

Make sure you bring an insurance certificate (Kammarkollegiet)

Bring an adapter for the trip (socket EU to UK)

## Permission to take photos and publish them?

- The hosts might take photos of us, and publish them using various media. Will try to handle this formally correct, but please help us and **contact us immediately** if you do not consent to this, or have any concerns regarding it!

# Questions?

Do you have any questions you would like to ask now?

Admin questions: Linda

Questions about academics/trip: Daniel, Paul, Christian, Elin